

UOL GROUP'S DINNER & DANCE

UOL celebrated its Annual Dinner & Dance at Pan Pacific Singapore Hotel on 27th March 2008. Themed "International Fiesta", it was the very first time the Group organized and celebrated the Annual Dinner & Dance solely for the staff of UOL. Chairman, Board of Directors and invited guests graced the occasion.

During the night, 51 employees received their long service awards ranging from 10 to 35 years from Chairman, Mr Wee Cho Yaw and Board member Mr Lim Kee Ming.

"In spite of the acute manpower shortage, the retention of manpower in UOL is good. We are fortunate to have nearly 50% of our staff with 15 years of service. We hope that UOL branding and leadership will be able to attract more talented manpower as well as to maintain good human resource relationship with our existing staff force," said Mr Gwee Lian Kheng, Group President and CEO.

Most of the 400 employees from UOL Group and Pan Pacific Orchard Hotel were dressed in different national costumes from China, Egypt, India, Korea, Mexico and other countries around the world. The evening's highlights include presenting 'Miss World' and 'Mr Universe' awards to 4 of our best dressed employees, "World Rhythm" game and "Ali Baba" cheer.





PANORAMA

– Live the High Life

UOL's latest entry into the steadily growing Kuala Lumpur property market manifests itself as a stunning, twin-tower residential block situated in the heart of the city. Riding on the buoyant market, where inner city properties are highly sought after, Panorama is positioned as a valuable lifestyle asset, offering residents access to an exclusive downtown address with inner city living experience.

"Investing in Malaysia is a natural choice. We already own the Parkroyal KL Hotel, Parkroyal Penang Hotel and One Residency at Jalan Raja Chulan. Kuala Lumpur's buoyant property scene is rapidly gaining attention among the global community as evidenced by the mushrooming of various luxury property developments within the city centre. We expect that, with UOL's branding and track record, Panorama will be well-received by foreign buyers and funds," said Mr Gwee Lian Kheng, Group President & CEO, UOL Group.

Created in celebration of "The High Life", Panorama is located in one of the most sought-after prestigious locales in KL at Persiaran Hampshire and opposite KLCC. At 33 storeys high and with a total of 223 apartment units, it commands panoramic views of the bustling city. The development offers an opportunity of owning an address that transcends beyond real estate with the offering of a lavish abode resplendent with connectivity, convenience and comfort; complimentary accessories for those who value urban excitement and presence.

Panorama is a stamp of UOL's famed award-winning design excellence and innovation. The sleek development is contemporary in style built in



tandem to reflect the vibrant pulse of the city. The striking exteriors use a creative blend of steel and glass providing a modern yet timeless elegance to the distinctive design.

Interiors are luxuriously appointed, with floor to ceiling windows stretching the entire length of the apartments. Soak in the mesmerizing views from anywhere in your home – right up to the lavishly spacious master bedroom. Added to the warmth and quality of wall-to-wall timber strip flooring is the striking dry and wet kitchen space of the bigger units that encourages interaction, and is both a communal showpiece and culinary haven. Panorama offers spacious one, two and three bedroom units ranging between 600 to 1,800 square feet.

Owners will enjoy privileged access to an extensive range of facilities and amenities ranging from an environmental deck equipped with a 37m infinity swimming pool, rainforest shower, outdoor jacuzzi, steam room and saunas, gymnasium, barbeque area and child-friendly amenities such as the children play pool and playground.

Interested parties can contact the showflat hotline at 603-2162 2448 or visit panorama.com.my.

A Niche Residential Development

UOL Group is set to launch Breeze by the East, a Freehold 88-unit development comprising 7 blocks of 5-storey units. Breeze is located along Upper East Coast Road and offers the convenience of access via the East Coast Parkway and Pan Island Expressways. Within its vicinity are reputable schools such as Tao Nan School, CHIJ Katong Convent, Temasek Secondary School and Victoria Junior College. Popular food haunts can also be found along the Siglap and Katong area. Here, homeowners can relax at East Coast Park and be in the action in the city all within minutes.

Breeze consists of two, three, four bedroom and Penthouse units. Facilities like gym, lap and hammock pools amidst modern tropical landscaping and clubhouse are readily available for residents to enjoy. Most units come with private lift lobbies.

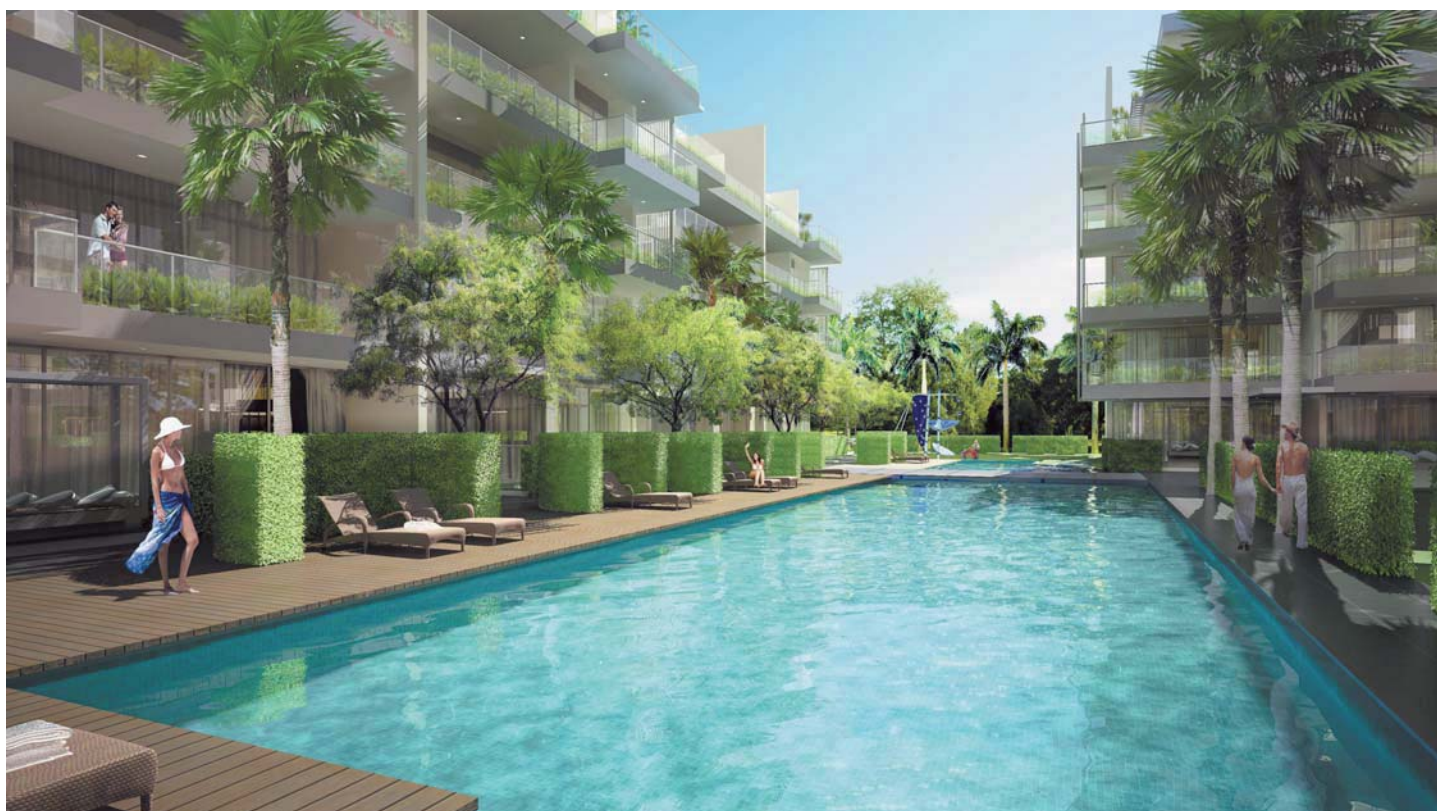
Breeze is inspired by the laidback and sunny beach-living of East Coast Park. Be greeted with a grand boulevard lined with palm trees and bask



in the sun on colourful hammocks. Stroll along the green corridor where a rhythmic datum of daybeds and neatly trimmed hedges unfold into an enchanting assemblage of pools. Relax in the Green Alcove where it wraps around your space yet offering you openness and privacy. Each unit on the ground floor comes with a custom-built daybed in a generous private enclosed space (PES).

The unique roof terraces and balconies for each unit stand out among the crowd. The wide living and dining areas attempt to envelope residents in the landscape, providing varied views and unique experiences of the outdoors – bringing a new meaning to indoor-outdoor living.

With extremely superb location and chic design, this distinctive development offers a new dimension to modern living. For more information, please call 6242 1788 or visit uol.com.sg/breezebytheeast.



UOL unveils Pan Pacific Serviced Suites

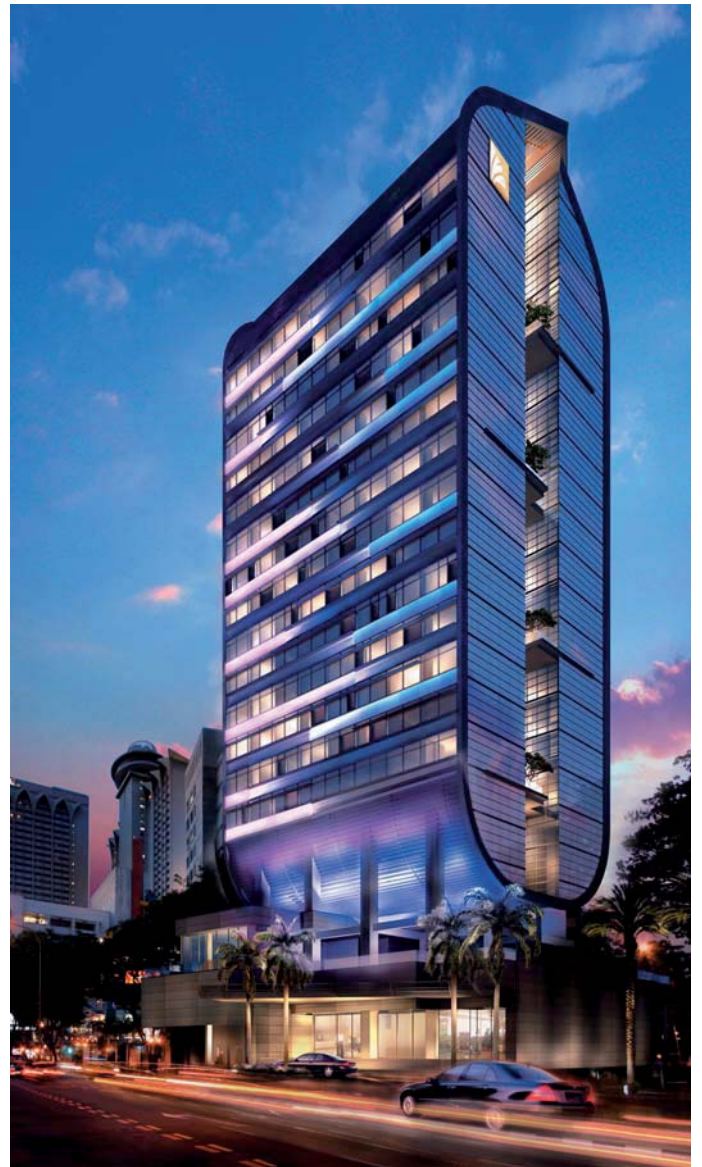
UOL Group, after its recent acquisition of Pan Pacific Hotels and Resorts, embarks on the luxury extended stay business. Its flagship property, Pan Pacific Serviced Suites caters specifically to the needs of overseas professionals. Located right next to Somerset MRT station, in the heart of Orchard Road, the 16-storey iconic building opened in April 2008.

A media launch was held on 5 March 2008. The event saw a good media turn-out of close to 35 media across prints and broadcast and was covered in both local and foreign major publications such as The Business Times, The Straits Times, The Edge, Reuters and Bloomberg.

"We have undertaken research including focus groups with business travellers and decision makers to find out what they seek in an ideal accommodation during overseas postings. The research has identified a prime opportunity in the market for us, which is the offering of a differentiated stay experience that recreates a home advantage with local connection to the city so that overseas professionals will feel less of a foreigner," said Mr Gwee Lian Kheng, Group President & CEO of UOL Group.

With just 126 suites comprising one-bedroom and two-bedroom Executive and Premium Suites as well as Penthouses, guests can expect a deeper level of personal service and attention. Understanding the needs of a business traveller on a mid-term stay, Pan Pacific Serviced Suites provides residents an option of turning their suites into offices. Besides designed to have separate entrances, these office suites are equipped to help them work efficiently, saving residents the hassle of renting another office space.

Besides the soft touches of the new offerings, Pan Pacific Services Suites is also fitted with the latest technology, including IP telephone,



high speed wired and wireless internet, Loewe TV and Bose Home theatre system in all bedrooms, fully-equipped Technogym equipment, self therapeutic spa, lap pool, the Living Room, the Pacific Lounge and Molton Brown toiletries.

Backed by Pan Pacific's 33 years of international hospitality expertise, the Pan Pacific Serviced Suites will offer an extended stay experience in stylish and luxurious executive suites with a home advantage of immediate business, social and support networks that enable residents to be instantly and effortlessly connected locally.

